

## **Finance and Production Control Management Information System Chittaranjan Locomotive Works**

Indian Railways has over 66,000 route kms. and running track of around 80,000 kms. It carries over 10 millions passengers every day and lifts more than one millions tonnes of freight traffic daily, with the help of around 6,900 locomotives, 2,91,000 wagons and 33,000 coaches. Indian Railways is one of the biggest employers in India with about 15 lakh employees.

At the apex level there is Railway Board, which is under Ministry of Railways. Under Railway Board, there are 16 zones called Zonal Railways like Northern Railway, Central Railway, Eastern Railway etc., 6 Production units viz. ICF, DLW, CLW, RCF, DCW, and WAP; Centralised Training Institutes and RDSO.

CLW manufactures around 220 Electric locomotives. Its target is to manufacture 300 electric locomotives by 2011. Due to its capacity expansion, it is planning to use IT in every activity of production, finance, personnel for proper utilization of man, machine and materials. It has planned towards automating the process of decision-making by effectively using Information Technology. In this situation CMC proposed a PCMIS solution which is a custom-built ERP for CLW.

### **Infrastructure**

To meet the IT needs of CLW, huge infrastructure having more than 500 terminals, 6 servers of various configurations and network spread over across CLW will be covered.

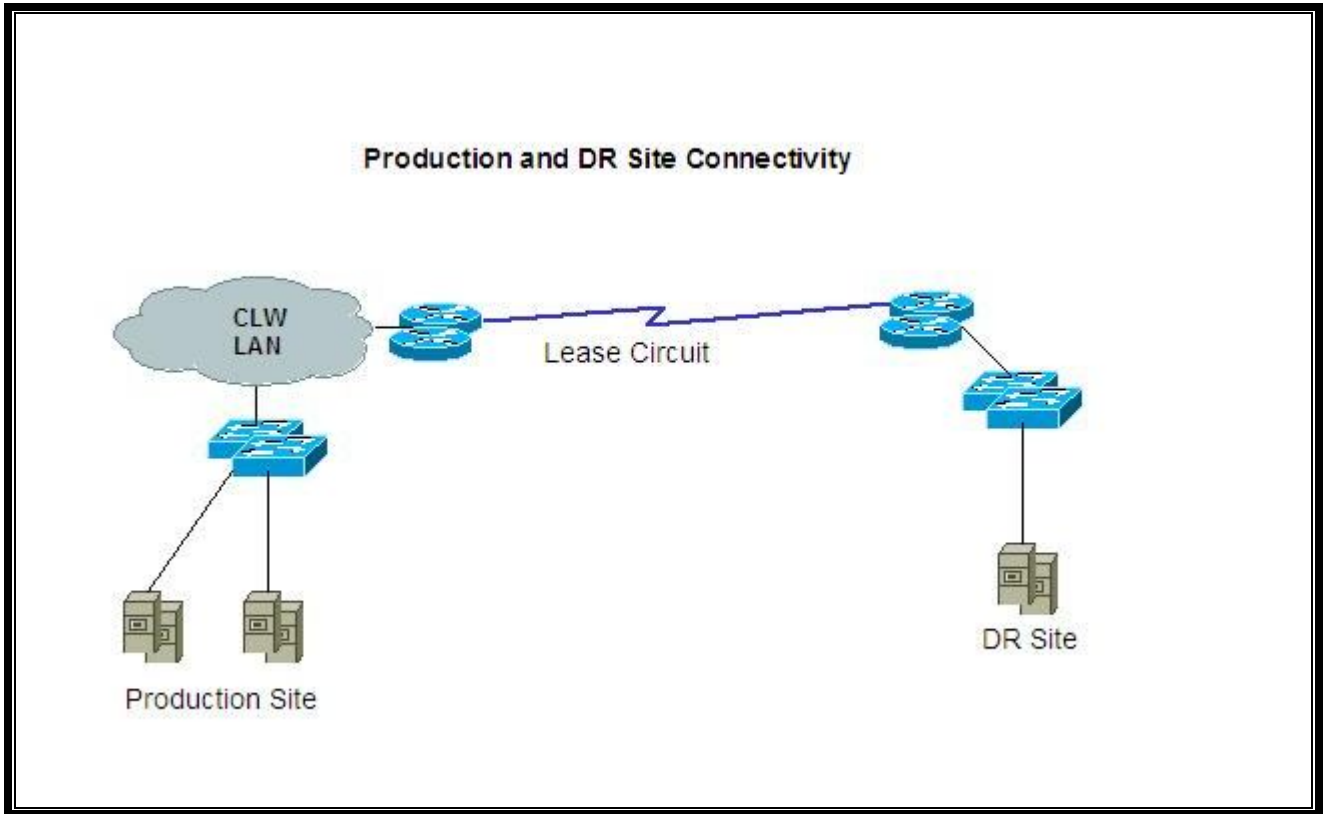
### **Applications**

- Finance Management Information System (FMIS)
- Payroll
- PF and Pension
- Costing
- Production Control Management Information System(PCMIS)
- Materials Management information Module(MMIM)
- Personnel Management Information Module(PMIM)
- Engine Failure Analysis Module

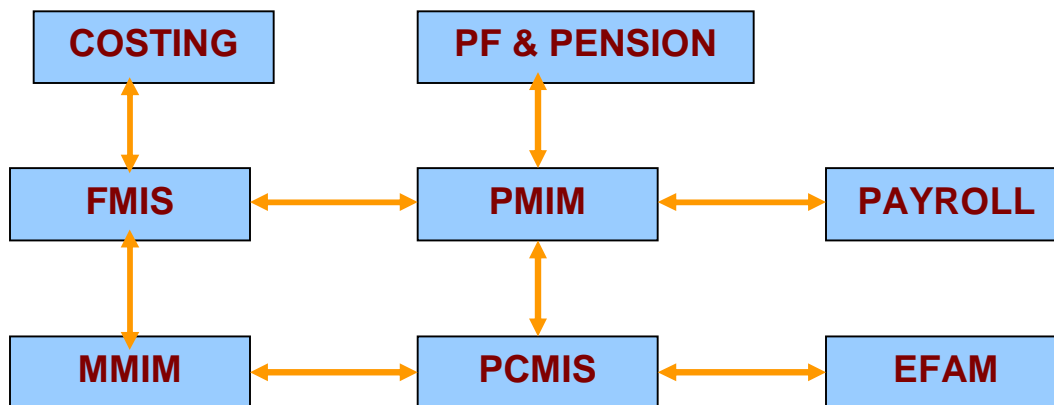
The applications Financial Management Information System, PF, Pension, Costing, etc. on a common platform with Central Database Server had been completed successfully. All the applications have gone on line by April 2008. PCMIS, MMIM, PMIM are under implementation.

### **Major highlights**

- Centralised database server system.
- Online applications: Custom built ERP



**Introduction of CLW Applications**



**FMIS**  
Financial Management Information System –Finance and Accounts Department

- FMIS is an integrated system that covers the working of the accounts office at CLW. The system handles payments made by CLW and accounts of CLW earnings apart from regular finance and account functions. A number of associated activities are also covered.
- FMIS is organised into modules, each module handling a category of activities. The different modules are Books, Cash & Pay, Suspense, Internal Check, Pension, PF etc.
- Using this module, the details of assets held by CLW can be maintained.

### **Payroll**

- It is an integrated system that covers all payments to employees and related items of work across CLW
- Payroll application covers data capture for all career events that affect various payments, recoveries during the service of an employee. Payments include monthly payroll, leave regularization and other supplementary employee claims. This application has interfaces with FMIS and PMIM

### **MMIM**

Materials Management Information Module – Stores and Depot Department

- MMIM is a state-of-art solution tailored to the business requirements of CLW where Procurement of material is done centrally and the materials are stocked in warehouse spread across at different locations. Materials Management Information Module is an online system for exchange of information between various warehouses and Central purchase office.
- The aim of the application is to provide system for exchange information regarding availability of material, inventory position, receipt / issue of materials to respective consignees as per the requisitions. Etc between depot, warehouses and central purchase office. The product is designed on the latest Client server platform using state-of-art technologies and tools and it has extremely easy-to-use and intuitive GUI. MMIS is a solution consisting of a suite of products like Purchase, Finance, Depot, Sales & Auction, Uniform and ADMIN module which are seamlessly integrated.

### **PMIM**

Personnel Management Information System) – Personnel Department

- PMIM (Personnel Management Information Module) is the system developed to automate all the HR functioning of CLW earlier which is done manually.
- PMIS eases the pressure of the organization to check now and then every time, reducing the searching time for any policy formulation related to HR functioning of the CLW.
- PMIM is WEB-BASED Application that can be easily accessed through any computer through Indian Railway's Intranet.

### **PCMIS : Production Control Management Information System**

The salient features of the proposed system are

- Integrated Application with easy replication
- Parameterised
- Security - Controlled access with user audit trail
- User Friendly Application with on line validations
- MIS reports generation

The proposed system will cover the following activities

- JPO
- Material Estimate
- Labour Estimate
- Monthly production target in a financial year
- Batch
- Job Card
- Route Card
- Material Requisition Slip
- Works Office Issue Slip
- Movement Slip
- M-8
- M-9
- M-13
- Bin Card
- Inspection
- Production
- Loco Pricing

**Benefits of the System**

Financial Management Information and related systems are already implemented in CLW. PCMIS project is under implementation in CLW. Likely benefits of the systems are:

- Totally Integrated system
- Tracking of materials
- Avoids manual processing
- Fast
  - Processing
  - Queries
  - Report Generation
- Organised Maintenance of Voluminous Data
- Data Archival easy
- Any Time Audit
- System is Person independent
- Customer Satisfaction is augmented with proper registration of Engine Failure by different zones